

Field Guide to the Freshwater Mussels of the Chipola River 2011

Amblema neislerii
Endangered USFWS
 approximately lifesize

FAT THREERIDGE



inflated shell
 7-9 horizontal, parallel
 ridges on shell; thick shell;
 conspicuous lateral teeth
 and thick hinge teeth

length: 67.5 cm
 width: 6-7 cm
habitat: main channel in
 slow to moderate current

Anodontoides radiatus
Endangered USFWS
 approximately lifesize

RAYED CREEKSHELL



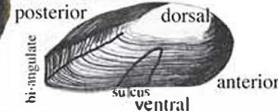
inflated shell
 thin shell
 dark green rays esp. along
 posterior edge of shell
 no lateral teeth
 single rudimentary
 pseudocardinal tooth
 length: 5-7.5 cm
 width: 2-3 cm

habitat: typically collected from small creeks, slack water areas in
 mud, silty clay or sand/gravel

Elliptio arctata **DELICATE SPIKE**



inflated shell: moderately thick
 without conspicuous teeth
 length: 6-7.5 (-10.5) cm
 width: 2-3.5 (-5) cm
 posterior



approximately lifesize

habitat: typically collected from small creeks, slack water areas in mud,
 silty clay or sand/gravel

Elliptio chipolaensis **CHIPOLA SLABSHELL**
Threatened USFWS



moderately thickened
 shell
 chestnut color periostracum
 1-4 dark concentric
 bands
 nacre typically salmon to
 bluish to whitish color
 slightly concave poste-
 rior slope

length: 7-8.5 cm
 width: 3-4.5 cm

approximately lifesize



habitat: sand; moderate current

Elliptio fumata **EASTERN ELLIPTIO** formerly *E. complanata*



shell shape is variable;
 pseudocardinal teeth are large,
 lateral teeth are heavy; peristra-
 cum dark brown to brown; nacre
 white to pinkish-white; confused
 with *E. pulata*.

length: 5-8 (-10.6) cm
 width: 4-5 cm

approximately lifesize

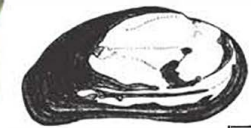
Elliptio crassidens **ELEPHANTEAR**

approximately
 lifesize



thick shell, shape is variable;
 pseudocardinal teeth are large,
 lateral teeth are heavy; peristra-
 cum dark brown to black; nacre
 white to pinkish-white

length: 4.5-11 cm
 width: 4-6 cm

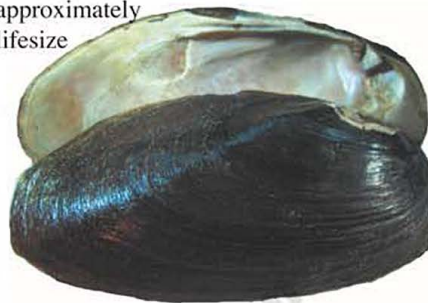


shell variable - older speci-
 mens are curved

habitat: rock, sand; slow, moderate to strong current

Elliptio pulata **VARIABLE SPIKE**

approximately
 lifesize



shell shape is variable;
 pseudocardinal teeth
 and lateral teeth are
 evident; peristracum
 brown to black; nacre
 white to pinkish-white.
 Confused with *E.*
fumata and *E. arctata*
 - both have darkly pig-
 mented branchial and
 anal papillae.

length: 3-8.5 cm
 width: 3-4 cm

habitat: streams, lakes, reservoirs in moder-
 ate current.

Hamiota subangulata **SHINY RAYED POCKETBOOK**

formerly *Lampsilis subangulata*

female

Endangered USFWS



periostracum shiny, yellow-
 brown with emerald green rays,
 older shells may be dark brown
 with faint rays; nacre white;

length: 6-8 cm
 width: 3-5 cm

male



habitat: sand, muddy
 sand; moderate current of
 primarily main channels

approximately lifesize

